



**CAUTION!**

Handle and install glass door carefully. Tempered glass may shatter if corners or edges come into contact with hard surfaces.

**IMPORTANT!**

Do not remove the glass from the door hinges at any point during installation! Removing the glass can cause misalignment, hinge damage, or glass breakage.

## Step 1: Preparing Sauna Door for Installation

### Shipping Protection:

- Remove all protective cardboard and plastic shipping material from door.
- Pull all staples from the outside of the door frame.
- Lay the door on a flat surface with the opening side facing upward.
- Have one person hold the door slightly open while the other removes the protective shipping guard at the bottom of the door (in red), see image 1: Shipping Guard.

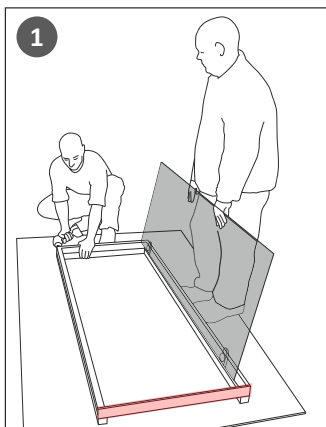
### Door Swing Direction:

- Check the desired door swing direction before installation.
- To change swing, remove the header board and reinstall it on the opposite side, see image 2: Header Board.
- **Important:** Ensure one person supports the glass door while the other removes the header board. Alternatively, place protective material under the glass to prevent damage during removal.

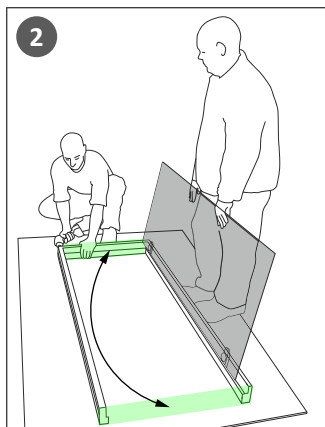
### Preparing the Workspace:

- Position the included wooden support sticks or other soft material under the doorway area, see image 3: Glass Protection. This protects the glass during installation and prevents contact with hard surfaces.

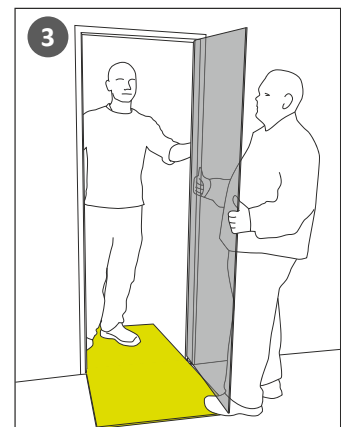
Shipping Guard



Header Board



Glass Protection



## Step 2: Installing Sauna Door

### Positioning the Door:

- Have one person hold the glass door slightly open while another supports the jambs.
- Carefully lift the door and place it into the doorway opening, see image 4: Positioning Door.

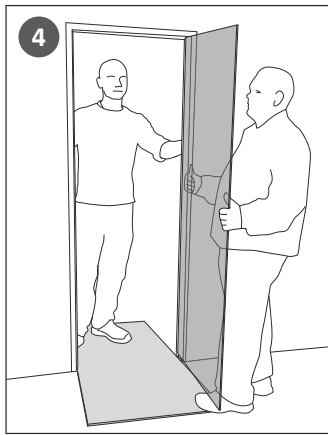
### Aligning the Jambs:

1. Use a level to confirm the jambs are plumb and level. Adjust with wedges or shims as needed.
2. Secure the jamb attached to the glass first using screws, see image 5: Securing Frame.
3. Close the door gently to check alignment of the opposite jamb.
4. Ensure the door opens and closes smoothly without contacting the frame.

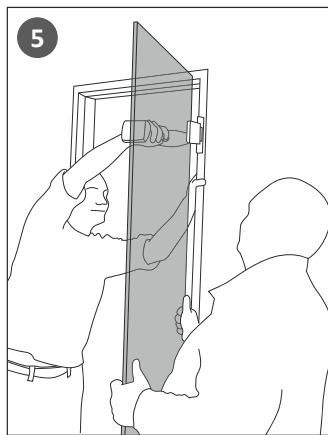
### Securing Frame:

- Secure the second jamb, ensuring it is plumb and level.
- Install the horizontal crossbeams onto the jamb.
- Fill gaps between the jamb and wall with spray foam for stability and insulation, see image 6: Securing Frame.

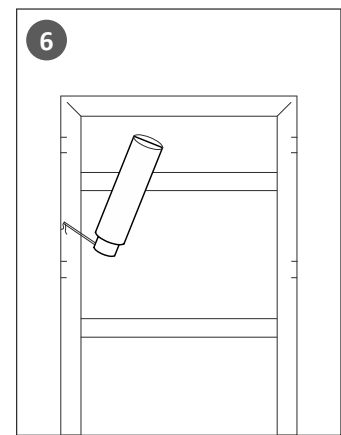
Positioning Door



Securing Frame



Securing Frame



## Step 3: Adjustments

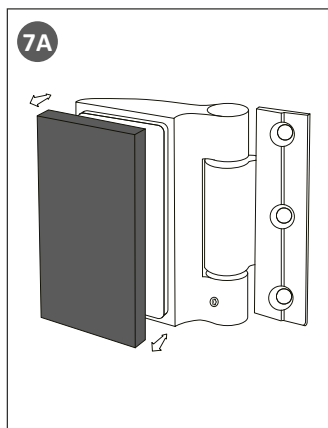
### Adjusting the Glass Position (If Needed):

- To adjust the door glass position, remove the hinge cover from the inside, see image 7A: Hinge Cover.
- Loosen the hinge bolts, reposition the glass, and tighten the bolts firmly to a minimum of 11ft-lb, see image 7B: Hinge Bolts.
- Ensure hinge bolts are properly tightened to prevent glass from slipping.

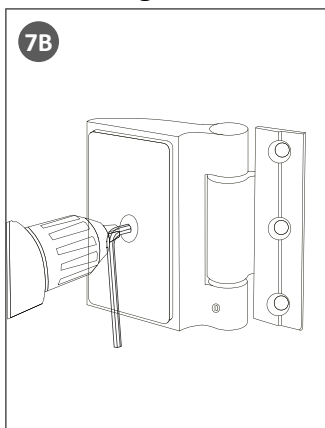
### Adjusting Roller Latch:

- If the latch requires adjustment, use a #2 Phillips screwdriver to turn the latch screw until the door closes smoothly and stays firmly shut. The latch should hold the door securely while allowing smooth opening without excessive force to open, see image 8: Roller Latch.

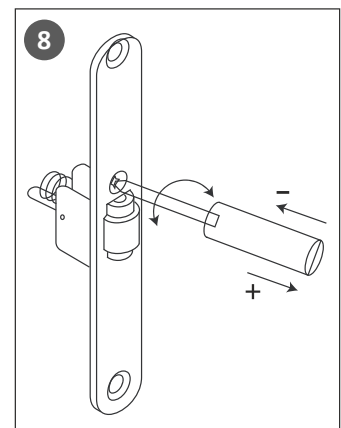
Hinge Cover



Hinge Bolts



Roller Latch



## Step 4: Installing Premium Handle

### Unboxing:

- Unbox premium handle and verify all components.
- Components include: handle, small screws, and hex key for assembly.



### Identifying Handles:

- Identify the wood handle and the metal handle.
  - The wood handle installs on the interior side of the door.
  - The metal handle installs on the exterior side of the door.
- Both handles will look identical.

**Tip:** To confirm the difference, lightly tap on each handle:

- The wood handle will produce a soft, dull sound.
- The metal handle will produce a sharp, metallic sound.

### Disassemble Handle:

- Using the provided hex key, carefully loosen and remove the small screws the hold the handle together, see image 1: Small Screws.
- This will allow you to separate the components for installation.
- Remove the large bolts inside the handle using a Phillips screw-driver.

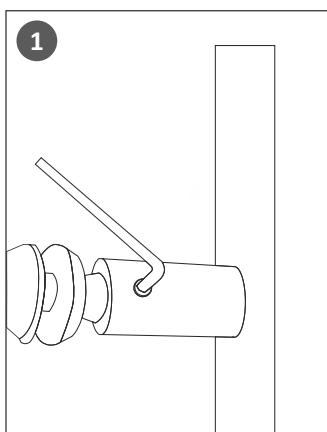
### Attaching Handle to Door:

- Position the first half of the handle (with large bolts removed) against the glass door.
- Carefully align the handle components in the correct order before securing them, see image 2: Align Components.
- Ensure handle is level and bolts are tightened securely.
- Align the second half of the handle on the opposite side of the glass door.
- Secure it in place by reattaching the small screws using the hex key, see image 3: Small Screws.

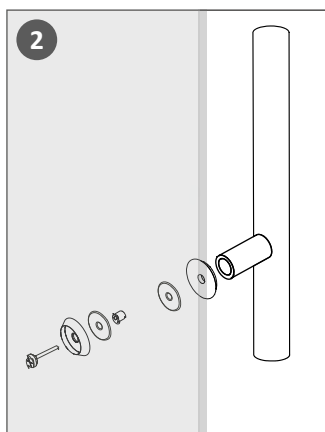
### Premium Handle



Small Screws



Align Components



Small Screws

